

VISY-X

MOXA Ethernet Converter Installation and configuration



Edition: 07/2010
Version: 1
Article No.: 350046



List of Contents

| | | |
|----------|-----------------------------------|-----------|
| 1 | Hardware Installation..... | 5 |
| 2 | Software installation..... | 7 |
| 3 | Testing | 13 |
| 4 | Table of figures | 14 |

© Copyright:

Reproduction and translation only with the written consent of the FAFNIR company.
FAFNIR reserves the right to carry out product alterations without prior notice.



1 Hardware Installation

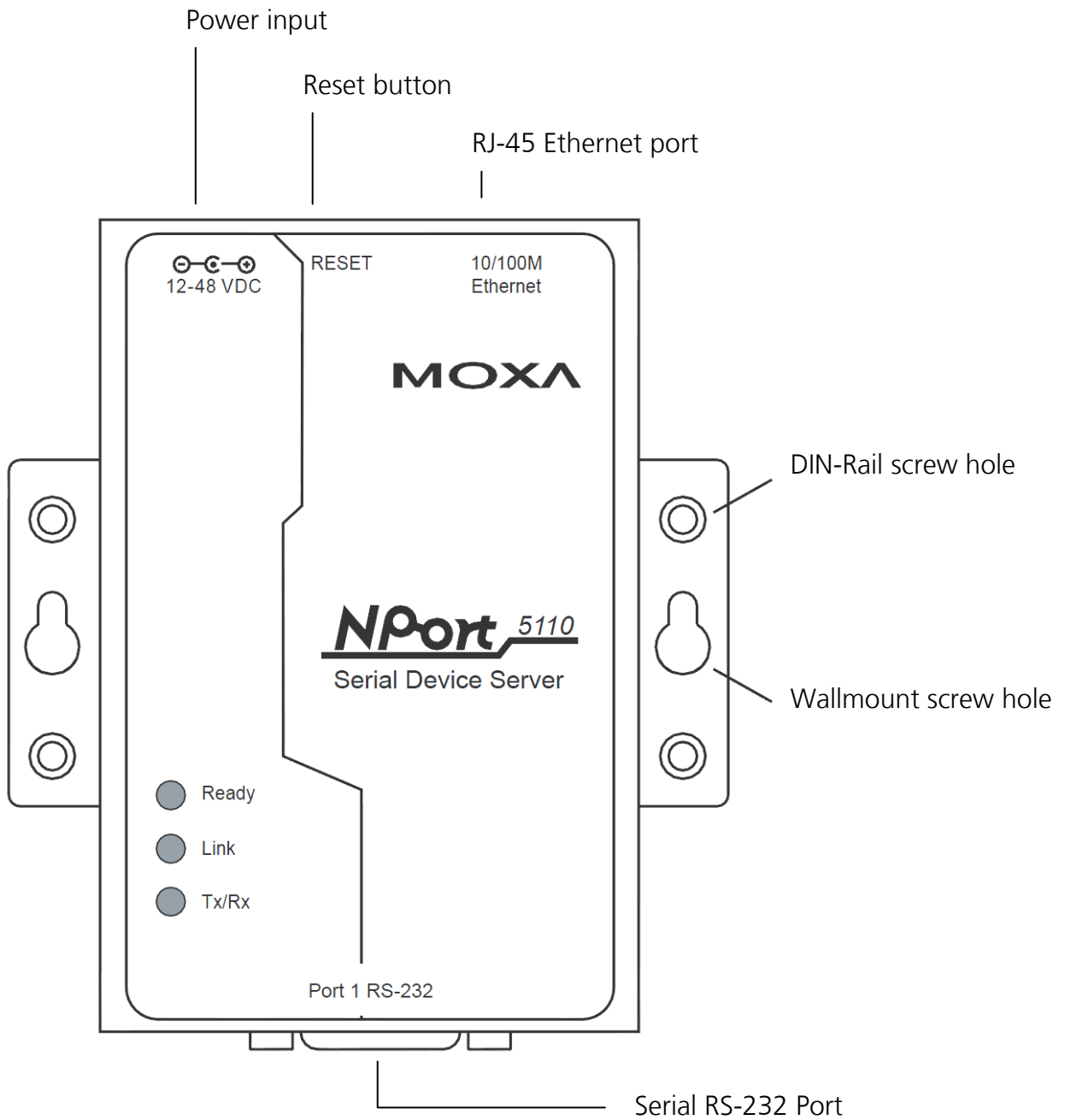


Figure 1: MOXA design

Connect the MOXA Ethernet Converter with:

- (1) Network cable
- (2) Power plug
- (3) Serial cable for connection with Service-Interface or Host-Interface of the VISY-Command



*If connected to the Service-Interface:
set DIP-Switch "S1: Service" on the VI-Board
(see the technical documentation of VISY-Command)*



*If connected to the Host-Interface:
set the Host-Code with the VISY-Setup software
(see the technical documentation of VISY-Setup)*



Check the connection cables if no data can be received

- (4) Connect the network cable with network port or router



A direct connection with a PC or Laptop during the configurations process is also possible. When the configuration is done it has to be connected to a network connector or a router.

- (5) Ask your system administrator for an IP address and network mask

2 Software installation

- (1) Install and run the program „NPort Administrator“ from the MOXA CD
- (2) Select “Configuration” (1)
- (3) Click on “Search” (2)

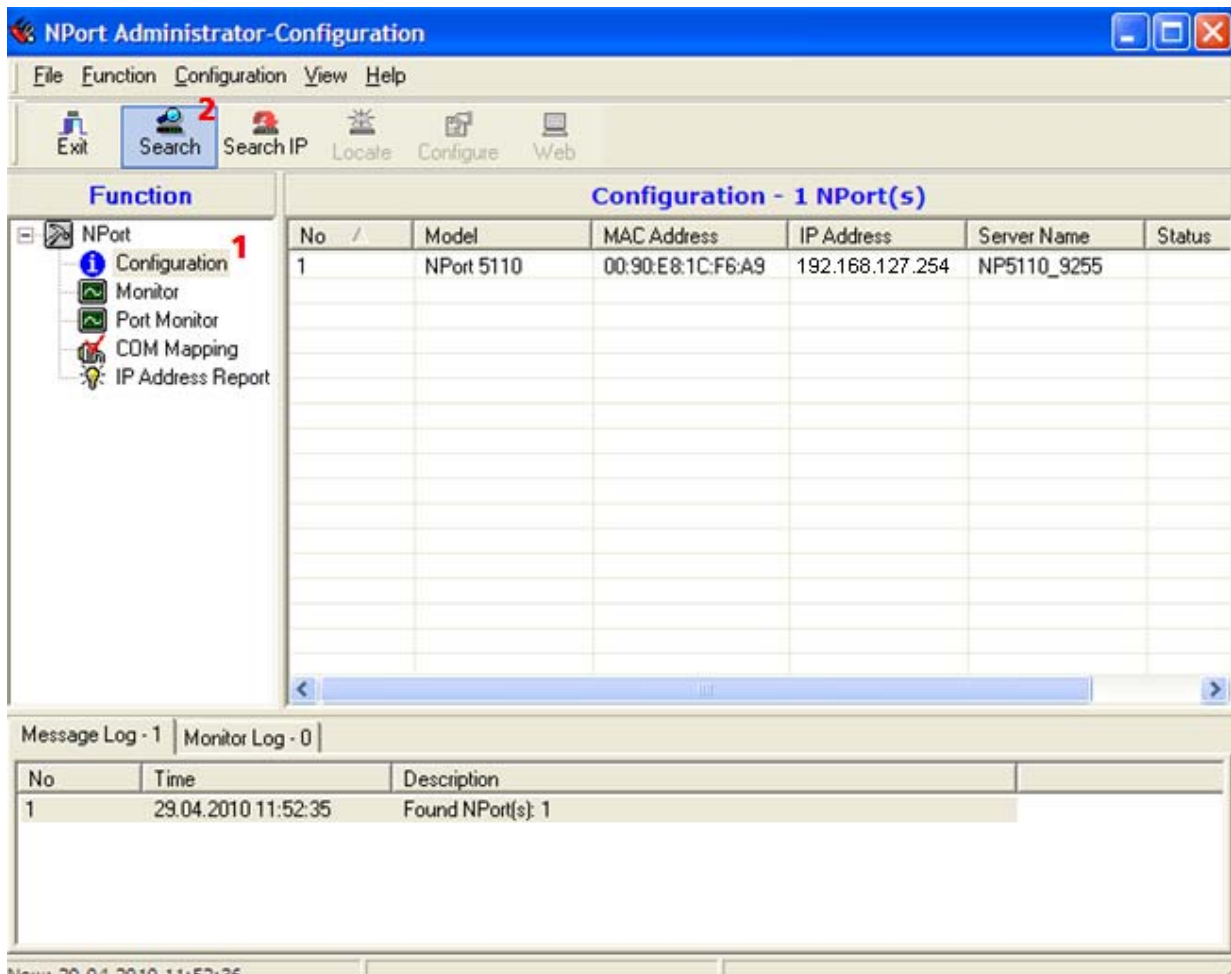


Figure 2: NPort configuration list

- (4) The MOXA Ethernet Converter has a pre-set IP address:
192.168.127.254
- (5) Select "NPort 5110" from list (here No. 1) and confirm with „Configure“.

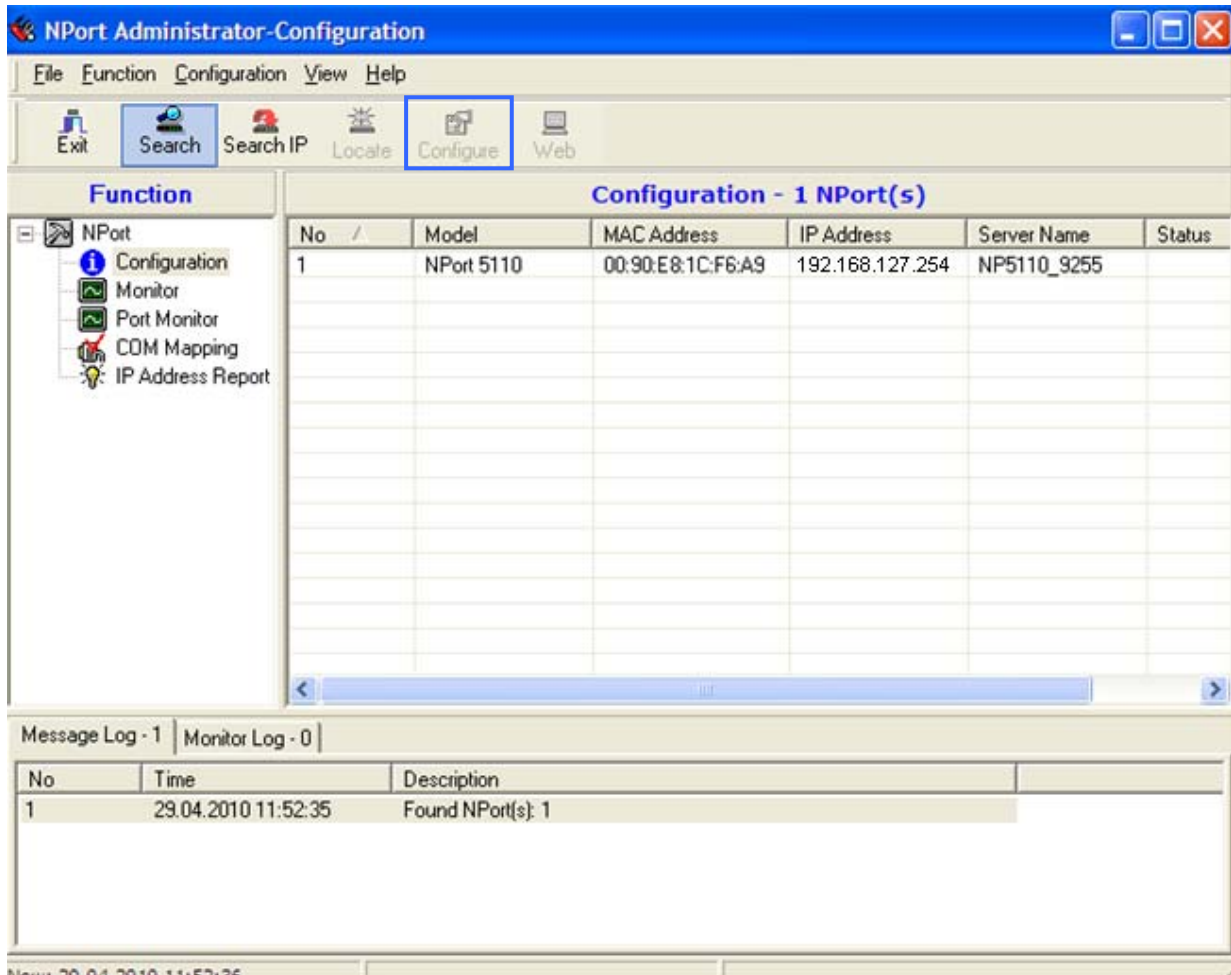


Figure 3: NPort configuration selection

(6) Choose the tab „Network“

IP address:

check “Modify”

enter the IP address your system administrator supported you with

Netmask (preset: 255.255.255.0)

check “Modify”

enter the netmask your system administrator supported you with

Confirm the configuration with a click on „OK“

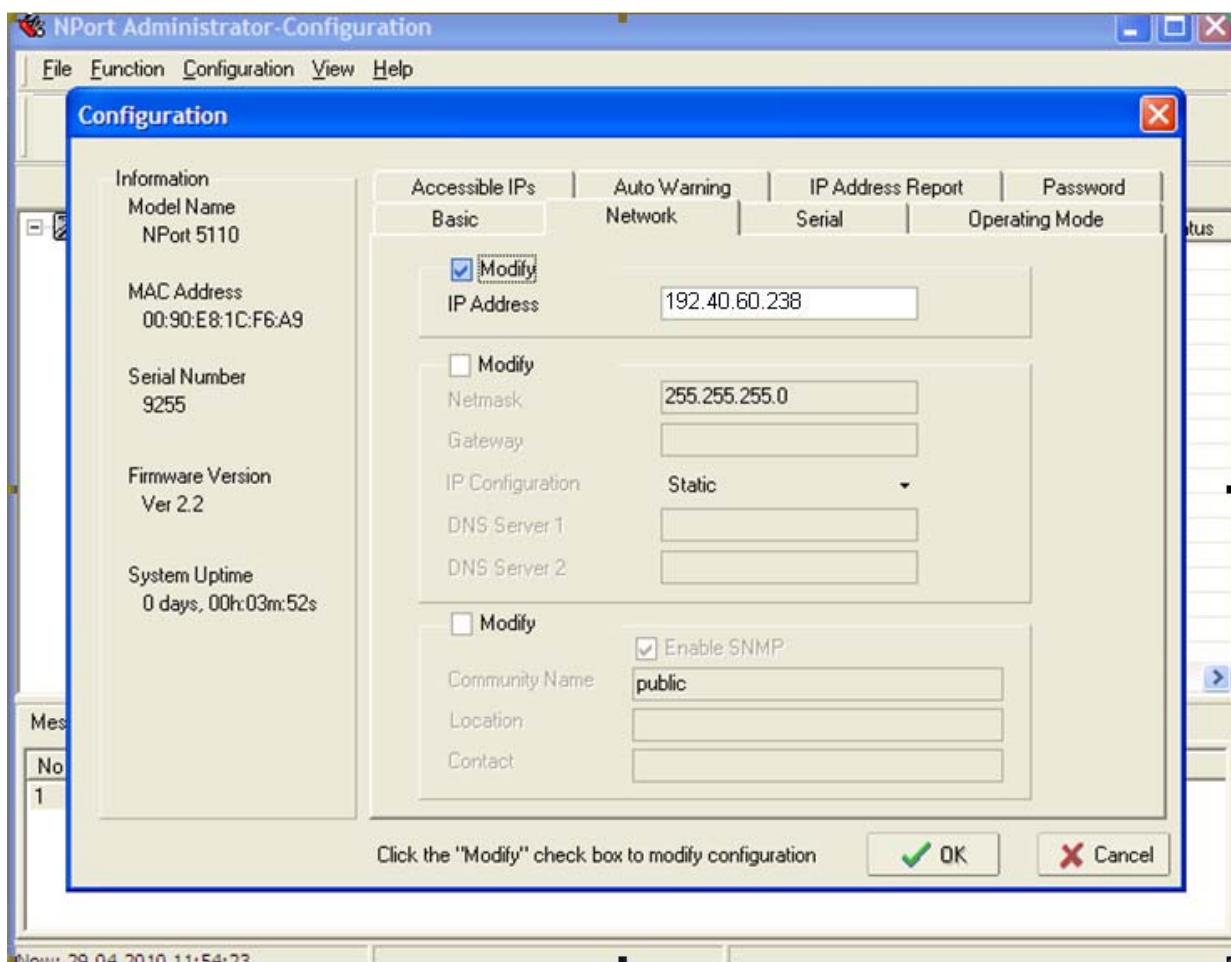


Figure 4: NPort configuration IP address

- (7) Type the IP address in the Internet-Browser
(PC has to be connected to the same network).

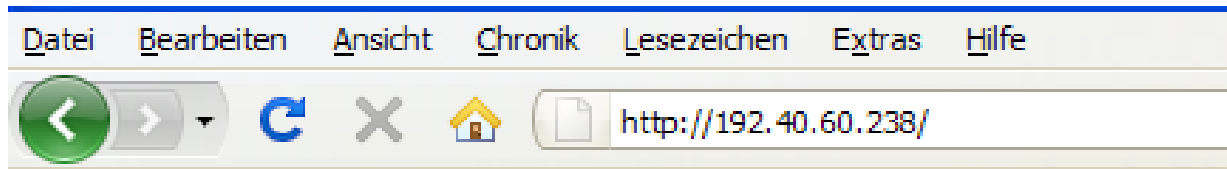


Figure 5: MOXA online connection

Then the NPort's web console opens:

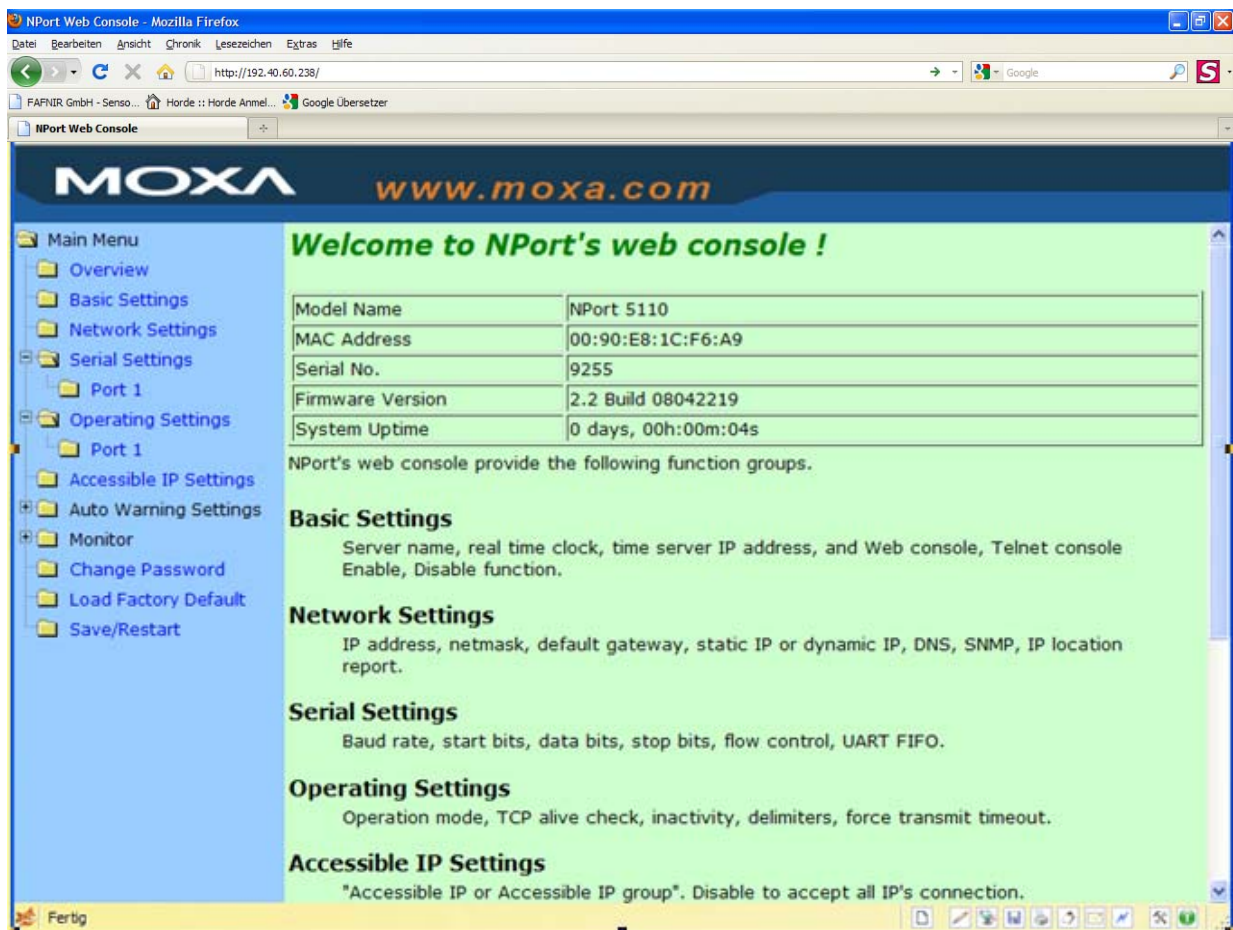


Figure 6: MOXA browser

- (8) Select "Serial Settings - Port 1" within the main menu and enter the following values

Baud Rate: 9600
Data bits: 8
Stop bits: 1
Parity: None
Flow control: None

Confirm the configuration with a click on "Submit"

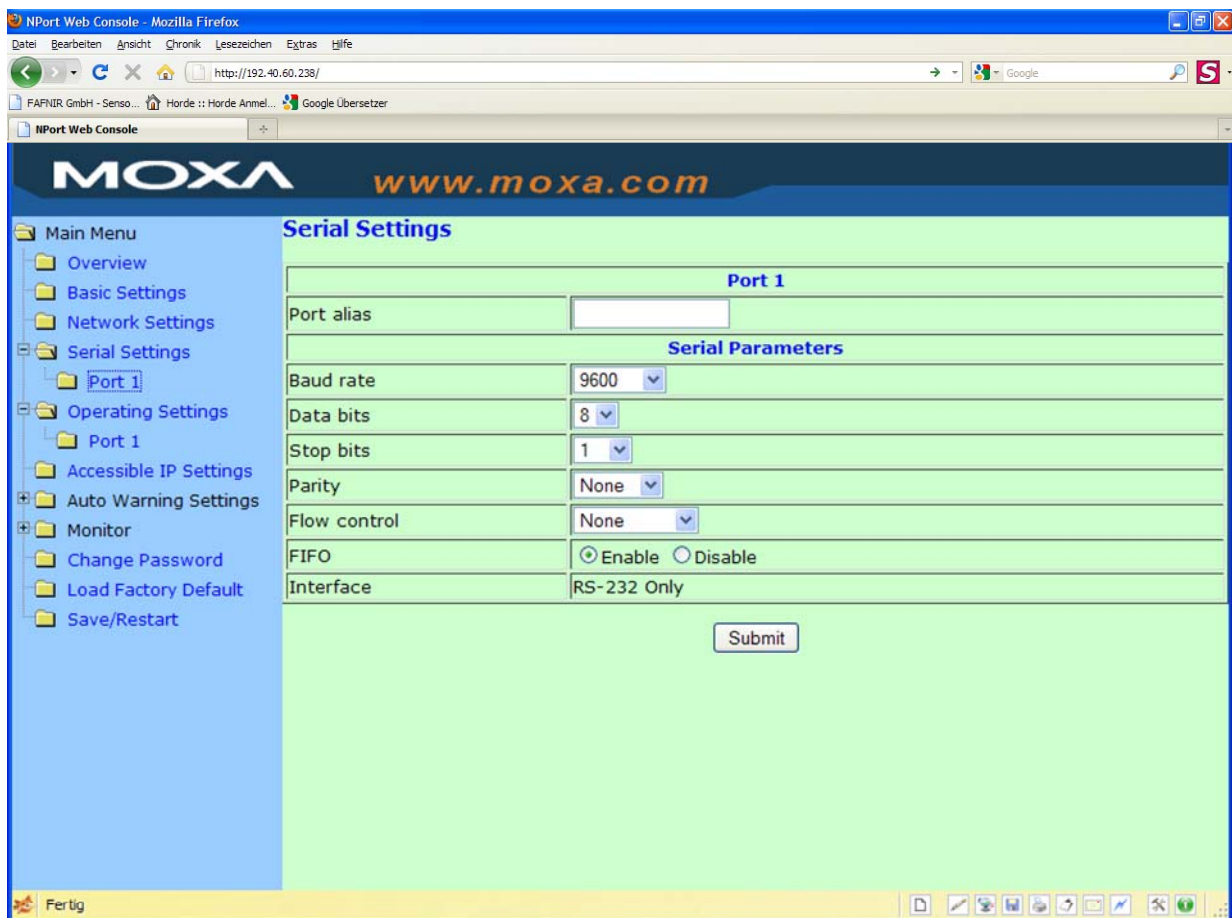


Figure 7: Configuration of the serial connection

- (9) Select "Operating Settings - Port 1" within the main menu and enter the following values:

Operation Mode: TCP Server Mode



The "Local TCP Port" is equal to the port number of VISY-Setup!

Confirm the configuration with a click on "Submit"

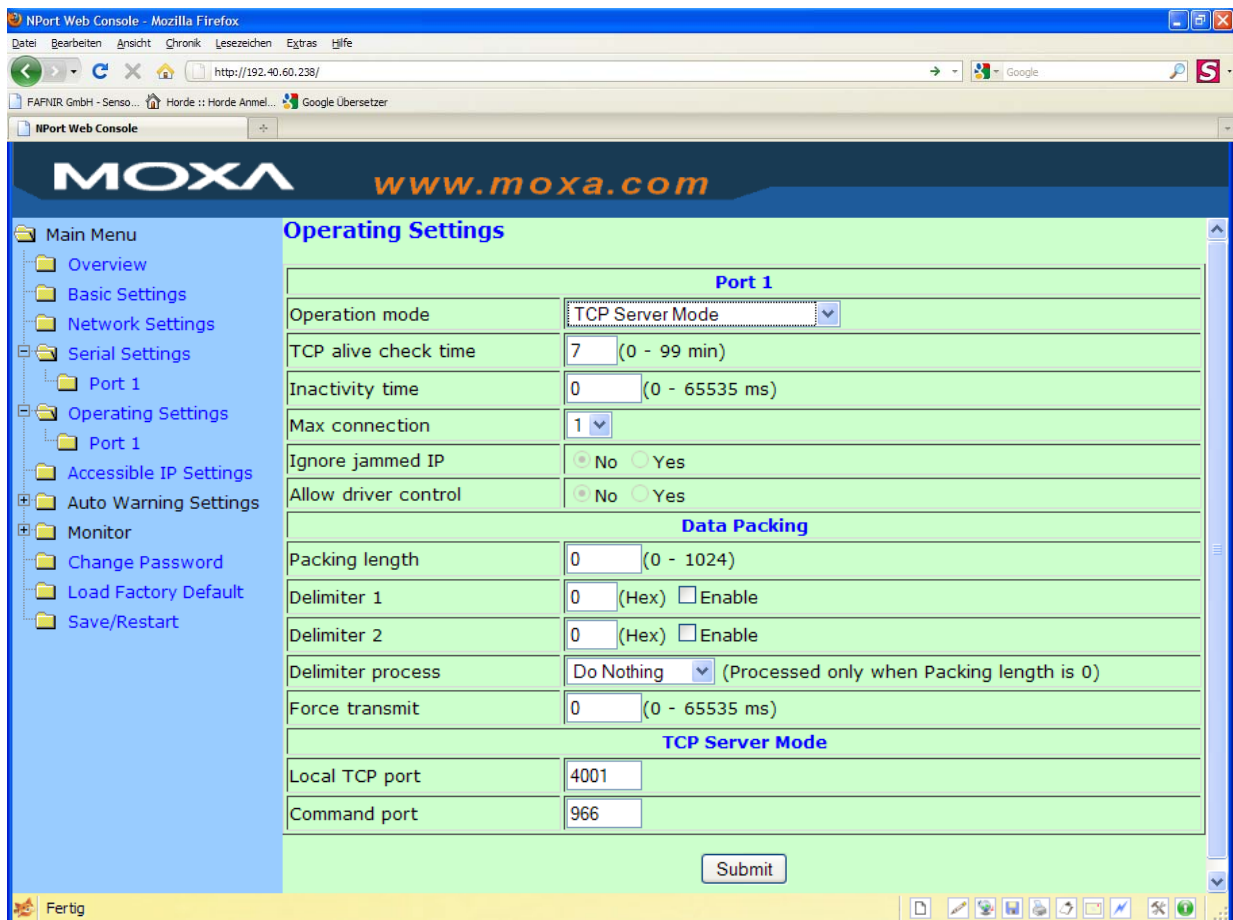


Figure 8: Configuration operating mode

- (10) Select Save/Restart within the main menu
- (11) (A) Disconnect the MOXA if it is connected directly to the PC and connect it with the router.
- (B) If the MOXA is directly connected to a router, the configuration has to be proceeded (e.g. port forwarding).

3 Testing

- (1) VISY-Setup is a useful tool to check the connection. For that purpose the MOXA has to be connected to the Service-Interface of the VISY-Command and the DIP-Switch S1 has to be set to OFF - OFF.

Select the tab „Network Connection“ and type in IP address und port number.

By clicking on “Connect“ the VISY-Setup program opens.

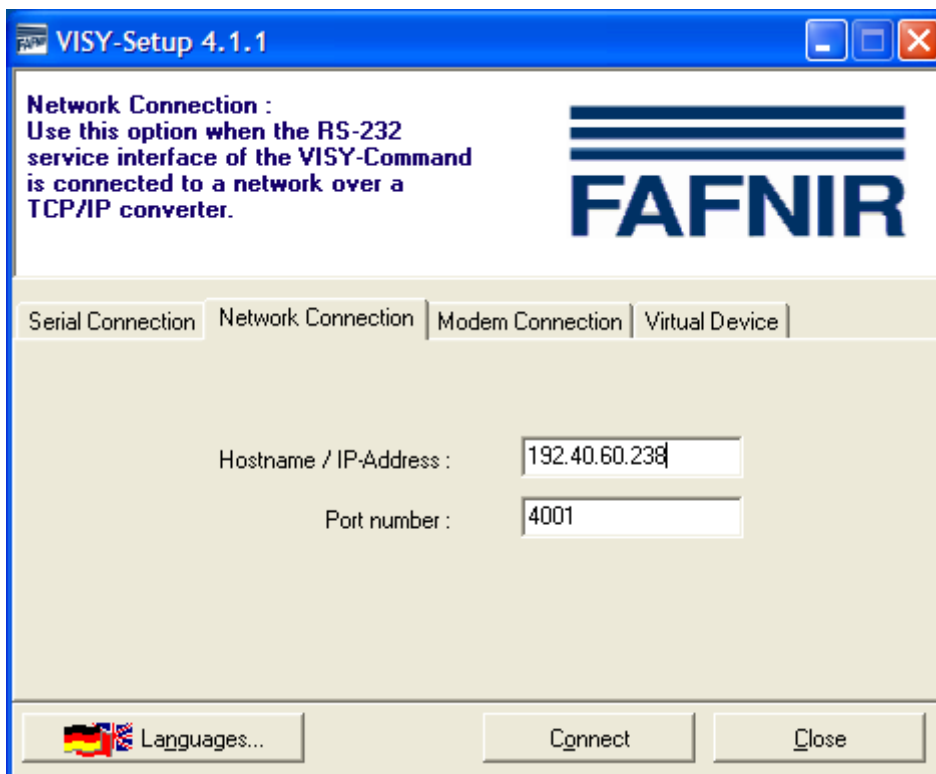


Figure 9: VISY-Setup network connection

- (2) Installation complete!

4 Table of figures

| | |
|--|----|
| Figure 1: MOXA design | 5 |
| Figure 2: NPort configuration list | 7 |
| Figure 3: NPort configuration selection | 8 |
| Figure 4: NPort configuration IP address | 9 |
| Figure 5: MOXA online connection | 10 |
| Figure 6: MOXA bowser | 10 |
| Figure 7: Configuration of the serial connection | 11 |
| Figure 8: Configuration operating mode | 12 |
| Figure 9: VISY-Setup network connection | 13 |