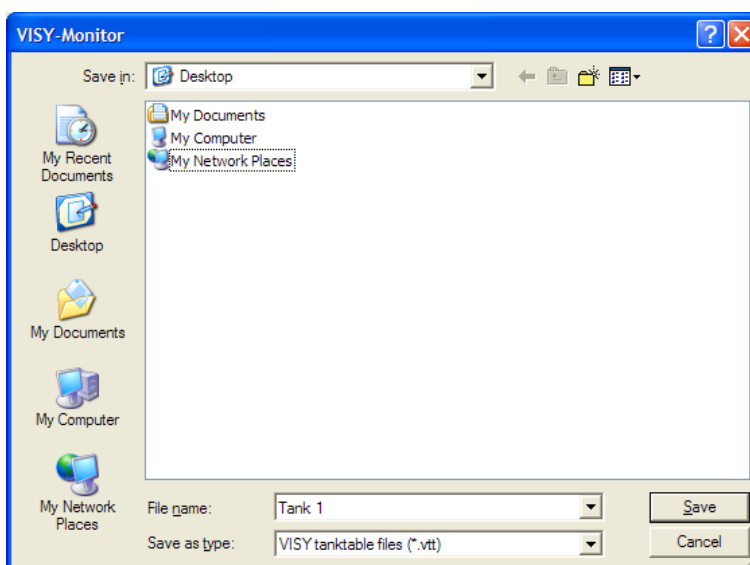


1 Introduction

To be able to run VISY-Command XL, it is necessary to export the tank table from the VISY-Monitor Config application to a file in the *.vtt VISY-Setup format and then send this file to the VI-Board in VISY-Command XL.

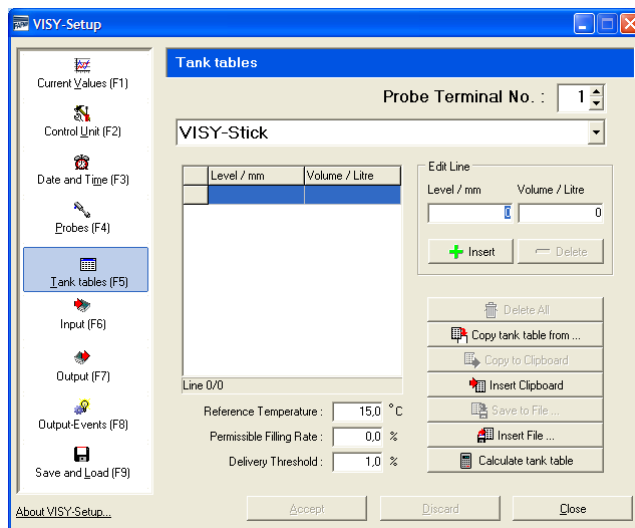
2 Exporting the tank table using VISY-Monitor Config

- (1) Move the window of the running VISY-Monitor View application
- (2) Start the "VISY-Monitor Config" application by double-clicking on the relevant desktop icon
- (3) At the password prompt, enter "visy-x" using the on-screen keyboard
- (4) Select "Configuration" ⇒ "Object Configuration"
- (5) In the "Object" drop-down list, select each tank one after the other and send the tank table as follows:
- (6) Click on the "Tank Table" button
- (7) Click on the "Export" button
- (8) In the "Save in ..." drop-down list, select the save location (preferably "Desktop")
- (9) In the "File name:" field, enter an appropriate file name (e.g. "Tank 1")
- (10) From the "Save as type:" drop-down list, select the "VISY tanktable files (*.vtt)" file type
- (11) Click on "Save"
- (12) Repeat the tank table export sequence for each tank (steps 5 to 12)
- (13) Close VISY-Monitor Config



3 Importing the tank table using VISY-Setup

- (1) Start the "VISY-Setup 4" application by double-clicking on the relevant desktop icon
- (2) Click on the "Connect" button
- (3) Click on the "Tank tables (F5)" button
- (4) In the "Probe Terminal No." drop-down list, select the probe terminal number assigned to each tank



- (5) The probe model "VISY-Stick" must be displayed
- (6) Click on the "Insert File ..." button
- (7) From the "Look in" drop-down list, select the location in which the tank table was saved
- (8) In the "File name:" field, select the exported file that you saved (in this example: "Tank 1.vtt")
- (9) Click on the "Open" button



- (10) The VISY-Setup application imports the tank table
- (11) Click on the "Accept" button, and repeat for all tanks
- (12) Maximise the VISY-Monitor View window by double-clicking on the title bar