

VISY-X

VISY-Monitor View 2.6

03/2008
Edition: 1
Artikel-Nr.: 207128

Table of contents

1	Introduction	3
2	Description of the standard display	4
2.1	Menu bar	4
2.2	Station name	4
2.3	Object group	4
2.4	Alarm message 1	4
2.5	Tendency arrow	4
2.6	Free space	4
2.7	Alarm message 2	5
2.8	Volume	5
3	Description of the tank detail display	6
4	Description of the tank group detail display	8
5	Menu bar	10
5.1	Main menu "File"	10
5.2	Main menu "Current Data"	10
5.3	Main menu "History"	10
6	List of figures	14

© Copyright:

Reproduction and translation only with the written consent of the FAFNIR company.
FAFNIR reserves the right to carry out product alterations without prior notice.

1 Introduction

VISY-Monitor View is a software module that runs under VISY-Monitor and serves the purpose of registering data in tanks at filling stations, fuel depots, etc. The VISY-Monitor View module is the display and report program within the VISY-Monitor software.

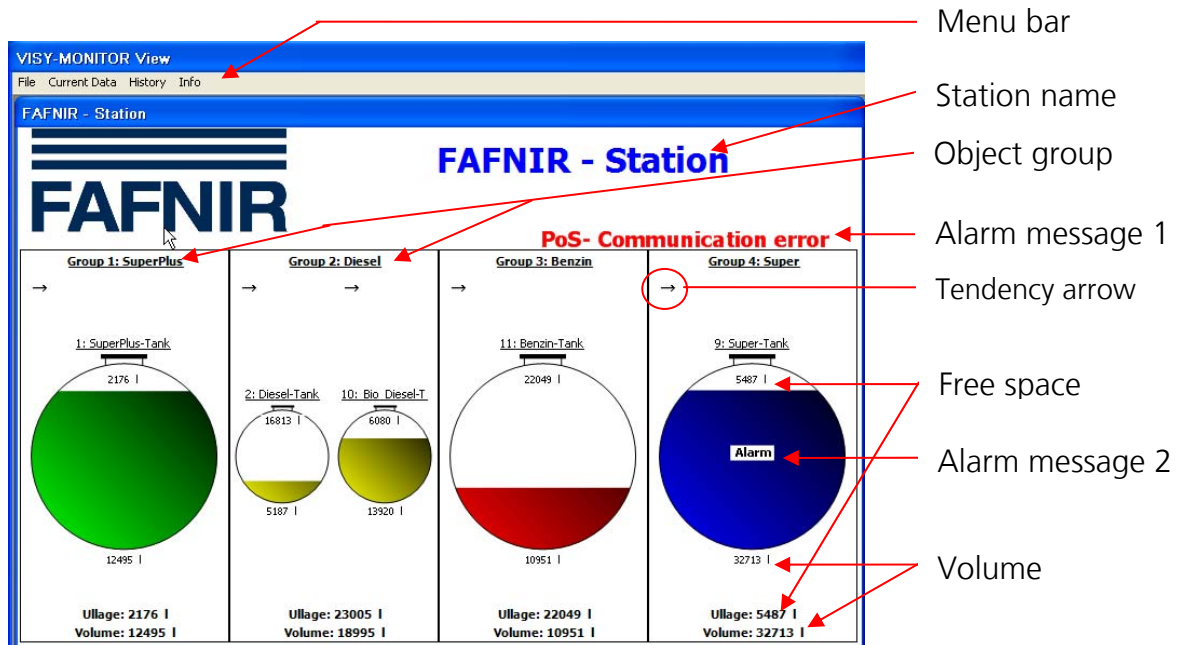


Figure 1: VISY-Monitor View user interface

2 Description of the standard display

2.1 Menu bar

The following submenus are displayed in the menu bar:

- File
- Current Data
- History
- Info

2.2 Station name

The station name is displayed here.

2.3 Object group

In the object group, tanks with identical contents (e.g. filled with the product diesel) are displayed if these tanks are connected to a siphon line.

2.4 Alarm message 1

Here, the alarm messages are displayed that cannot be assigned to a tank, e.g. a "PoS communication error".

2.5 Tendency arrow

At the time when the reading is taken, the tendency arrow can be used to determine whether the filling volume has increased, decreased, or has not changed.

2.6 Free space

The displayed free space is equivalent to the volume with which the tank can be filled up to the permissible filling degree.

2.7 Alarm message 2

The alarm message indicates that for this tank one or several of the following alarms/warnings were activated:

- ... for products
alarm, high volume
warning, high volume
warning, low volume
alarm, low volume
- ... for water
alarm
water

To display the cause of the alarm message, see item **0**, Figure 3

2.8 Volume

The volume is the filling quantity of the tank in litres with which the tank has been filled.

3 Description of the tank detail display

To change over to the tank detail display, click on the respective tank symbol (see Figure 2).

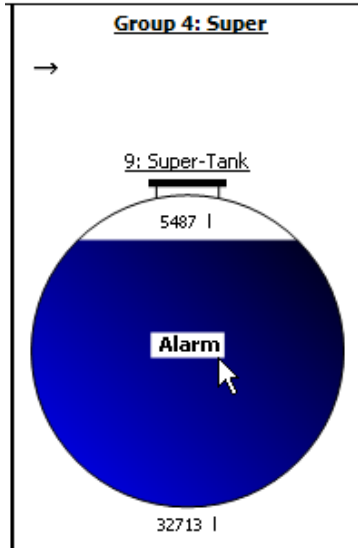


Figure 2: selecting the tank

The tank detail display is then opened (see Figure 3).

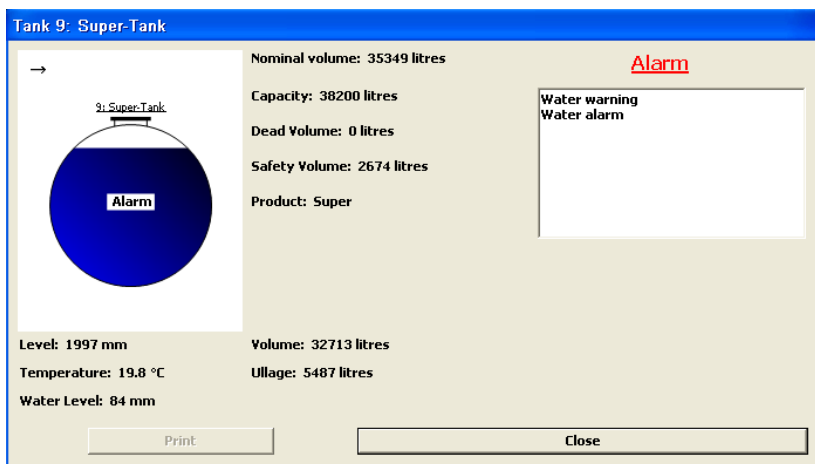


Figure 3: tank detail display

Level

The product filling level in mm is displayed.

Temperature

The product temperature in degrees Celsius is displayed.

Water Level

The water level in mm is displayed.

Nominal volume

The nominal volume is the actual volume of the tank and is displayed in litres.

Capacity

The capacity is calculated from the addition of the volume and the free space.

Dead volume

The dead volume is the volume that is located below the suction pipe and is displayed in litres.

Safety volume

The safety volume in litres is the free space inside the tank that is located above the preset maximum filling limit.

Product

The product stored in the tank is displayed.

Volume

The volume is the filling quantity of the tank in litres with which the tank has been filled.

Ullage

The ullage is equivalent to the volume in litres with which the tank can be filled up to the permissible filling degree.

Alarm window

In the alarm window, all alarm/warning messages are displayed that are active for this tank.

Print

The current tank data is printed by the connected printer.

Close

The "Tank detail display" window is closed.

4 Description of the tank group detail display

To change over to the tank detail display, click on the lettering "Group x" (see Figure 4)

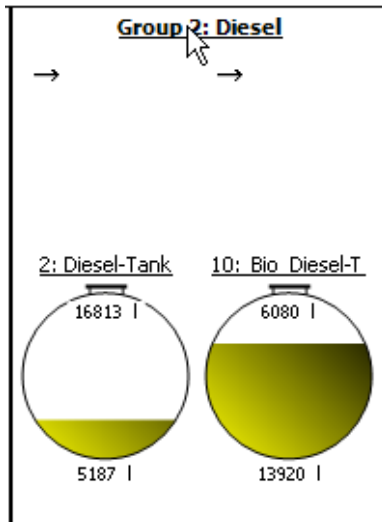


Figure 4: selecting the tank group detail display (see cursor)

The tank group detail display is then opened (see Figure 5).



Figure 5: tank group detail display

Capacity

The capacity is the addition of the individual capacities of the tanks combined in this tank group.

Safety volume

The safety volume in litres is the addition of the individual safety volumes of the tanks combined in this tank group.

Product

The product stored in the tank group is displayed.

Delivery

The data of the last delivery for this tank group is displayed.

- Date of delivery (yyyy.mm.dd)
- Time of delivery (hh:mm)
- Delivery volume in litres

Volume

The volume is the addition of the filling quantity of the tanks combined in this tank group in litres with which the tanks have been filled.

Temperature

The mean product temperature of the tanks combined in this tank group in degrees Celsius is displayed.

Ullage

The ullage is equivalent to the addition of the individual free space volumes in litres.



The ullage volume displayed here must not be used for the purpose of filling the individual tanks!

Print

The current tank group data is printed by the connected printer.

Close

The "Tank group detail display" window is closed.

5 Menu bar

5.1 Main menu "File"

In the main menu "File", you will find the following subitems:

- Language
- Exit

5.1.1 Language

Menu selection: File → Language

Here, please select the language for the VISY-Monitor View module.

5.1.2 Exit

Menu selection: File → Exit

The VISY-Monitor View module can only be exited by entering a password.

5.2 Main menu "Current Data"

In the main menu "Current Data", you will find the following subitem: Print

The current tank data is printed by the connected printer.

5.3 Main menu "History"

In the main menu "History", you will find the following subitems:

- Inventory
- Deliveries
- Alarms
- Reconciliation
- Lost control
- Sales Data

5.3.1 Inventory

In the submenu "Inventory", the following data histories can be displayed or printed out (as tabular and graphical representations):

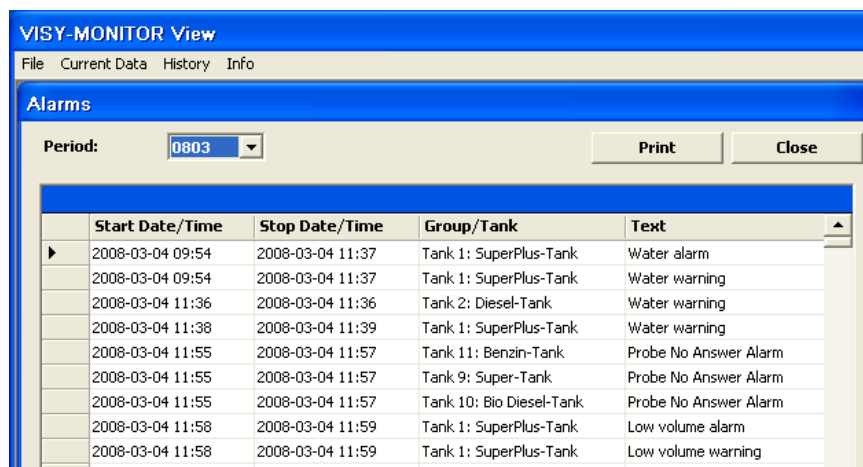
- Product volume history
- Product level history
- Temperature history
- Water Level history

5.3.2 Deliveries

In the submenu "Deliveries", the following delivery data histories can be displayed or printed out.

5.3.3 Alarms

In the submenu "Alarms", the following delivery data histories can be displayed or printed out.



The screenshot shows the 'Alarms' window in the VISY-MONITOR View application. The window has a menu bar with 'File', 'Current Data', 'History', and 'Info'. Below the menu bar, there is a 'Period:' dropdown menu set to '0803', and 'Print' and 'Close' buttons. The main area contains a table with the following columns: Start Date/Time, Stop Date/Time, Group/Tank, and Text.

Start Date/Time	Stop Date/Time	Group/Tank	Text
2008-03-04 09:54	2008-03-04 11:37	Tank 1: SuperPlus-Tank	Water alarm
2008-03-04 09:54	2008-03-04 11:37	Tank 1: SuperPlus-Tank	Water warning
2008-03-04 11:36	2008-03-04 11:36	Tank 2: Diesel-Tank	Water warning
2008-03-04 11:38	2008-03-04 11:39	Tank 1: SuperPlus-Tank	Water warning
2008-03-04 11:55	2008-03-04 11:57	Tank 11: Benzin-Tank	Probe No Answer Alarm
2008-03-04 11:55	2008-03-04 11:57	Tank 9: Super-Tank	Probe No Answer Alarm
2008-03-04 11:55	2008-03-04 11:57	Tank 10: Bio Diesel-Tank	Probe No Answer Alarm
2008-03-04 11:58	2008-03-04 11:59	Tank 1: SuperPlus-Tank	Low volume alarm
2008-03-04 11:58	2008-03-04 11:59	Tank 1: SuperPlus-Tank	Low volume warning

Figure 6: alarm history

Period

The month can be selected here.

Start Date/Time

Starting time of the alarm

Stop Date/Time

Stopping time of the alarm

Group/Tank

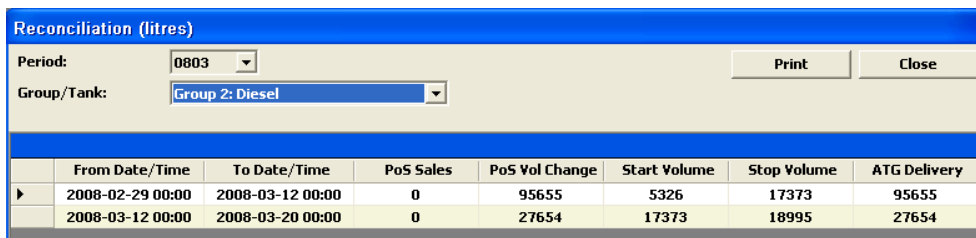
Assignment of the alarms – to a group or to a tank



Alarms that cannot be assigned to a group or to a tank are marked with three dashes "- - -".

5.3.4 Reconciliation

In the submenu "Reconciliation", the following reconciliation tables can be displayed or printed out.

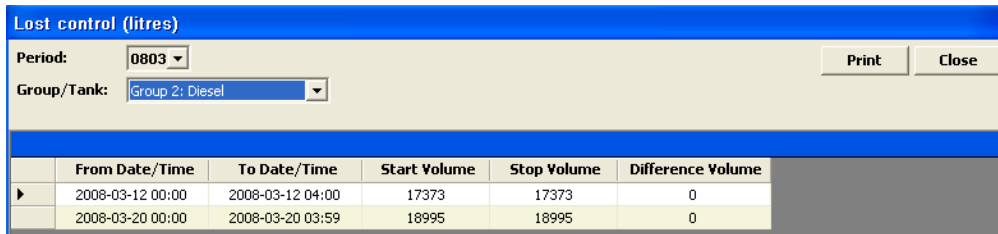


	From Date/Time	To Date/Time	PoS Sales	PoS Vol Change	Start Volume	Stop Volume	ATG Delivery
▶	2008-02-29 00:00	2008-03-12 00:00	0	95655	5326	17373	95655
	2008-03-12 00:00	2008-03-20 00:00	0	27654	17373	18995	27654

Figure 7: reconciliation table

5.3.5 Lost Control

In the submenu "Lost Control", the tables for the lost control can be displayed or printed out.

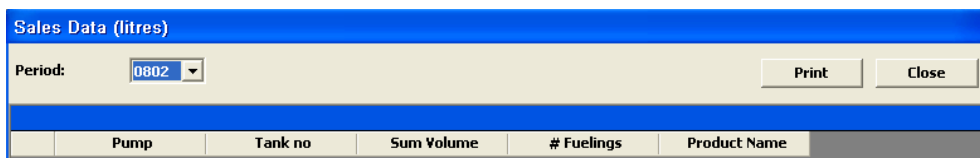


	From Date/Time	To Date/Time	Start Volume	Stop Volume	Difference Volume
▶	2008-03-12 00:00	2008-03-12 04:00	17373	17373	0
	2008-03-20 00:00	2008-03-20 03:59	18995	18995	0

Figure 8: table lost control

5.3.6 Sales data

In the submenu "Sales data", the sales data can be displayed in tabular form with the following contents.



	Pump	Tank no	Sum Volume	# Fuelings	Product Name
--	------	---------	------------	------------	--------------

Figure 9: table – sales data

Period

Selection of the period in the format "yymm".

Pump

The different pumps points are listed in this column.

Tank no.

The numbers of the tanks from which the dispenser point takes the fuel (the product) are listed in this column.

Sum volume

The cumulated volume for the respective dispenser point is displayed in this column.

Fuellings

The number of fuellings performed at the respective dispenser point is displayed in this column.

Product name

The product assigned to the dispenser point and tank is displayed in this column.

6 List of figures

Figure 1: VISY-Monitor View user interface.....	3
Figure 2: selecting the tank	6
Figure 3: tank detail display.....	6
Figure 4: selecting the tank group detail display (see cursor)	8
Figure 5: tank group detail display.....	8
Figure 6: alarm history	11
Figure 7: reconciliation table	12
Figure 8: table lost control.....	12
Figure 9: table – sales data.....	12